



MusicTrainerProf User Guide V1.0

1. Overview

The main use-case for “**MusicTrainerProf**” is to repeat specific sections of a movie or audio-file.

I (as a guitar-player in a live-band) personally need that for learning specific parts of a guitar-song.

MusicTrainerProf is currently available for:

- iOS
- MacCatalyst

The App is free - and is the first released App in a planned series of „Apps for musicians“.

Comments/Proposals/Reviews/Experiences with it are strongly welcome!

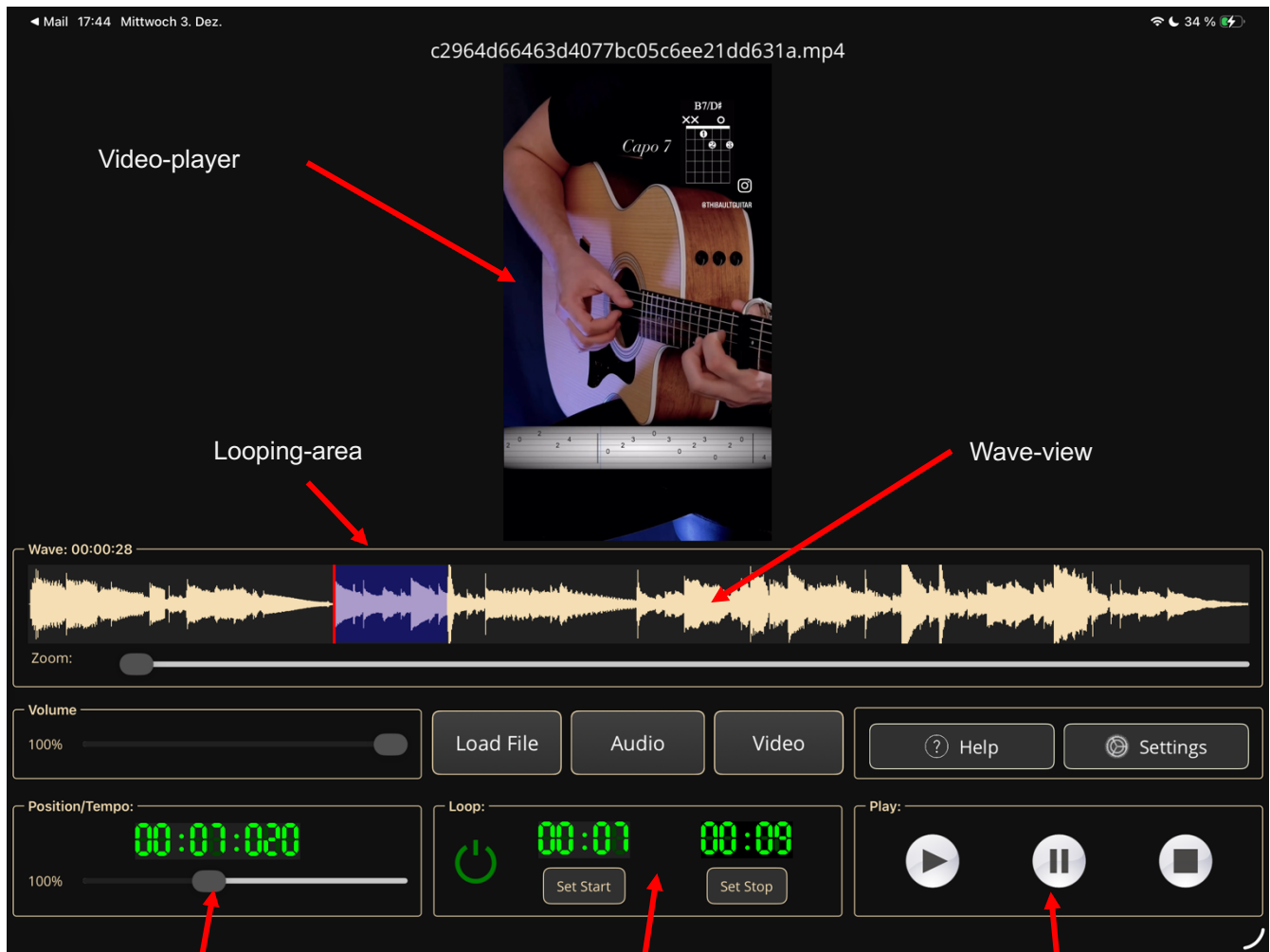
➔ You can contact me with the e-mail Midiprof@T-online.de

Functionality of „MusicTrainerProf“:

- Load music-files from the music-library.
- Load video-files from the movie-Library.
- Load music- or video-files from the file-system.
- Show the audio-content in a wave-view.
- Decrease the play-speed.
- Define an area which can be played again and again (looped).

2. User-Interface of MusicTrainerProf

2.1. App-window



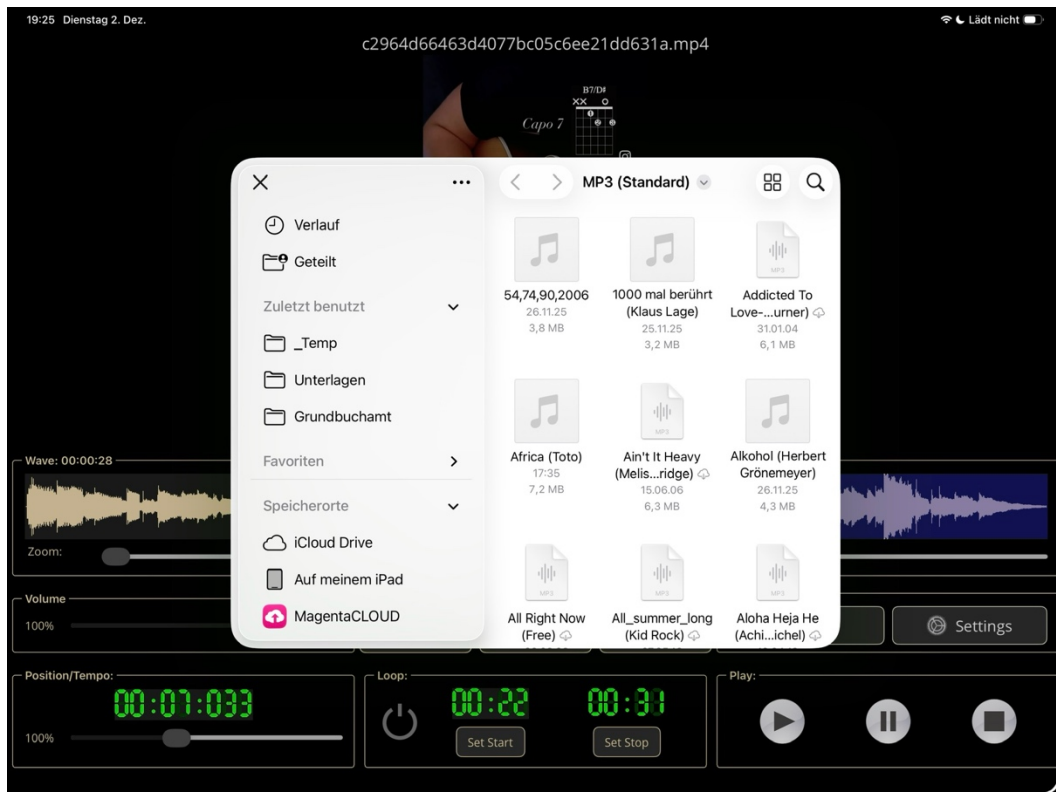
Set play-speed

Define looping-area

Player controls

2.2. Load-file dialog

With that dialog, an existing video- or audio-file can be loaded from the file-system:



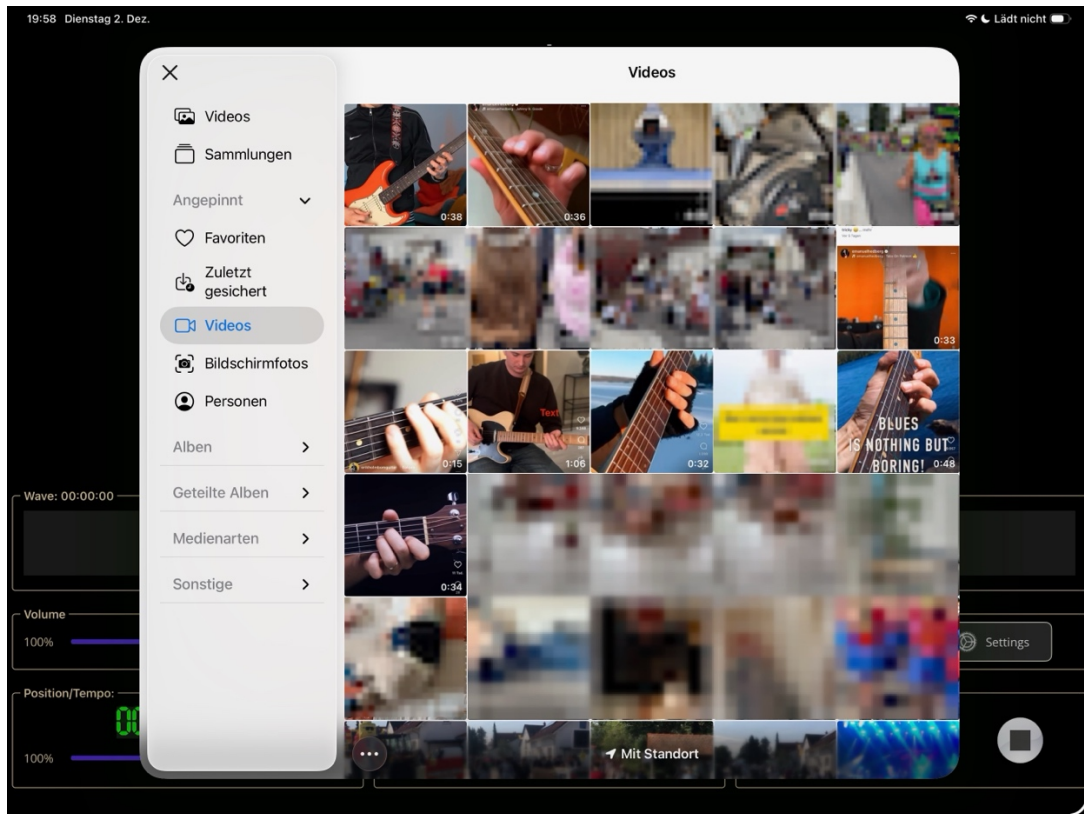
2.3. Load-audio dialog

With that dialog, an existing audio-file can be loaded from the music-library:



2.4. Load-video dialog

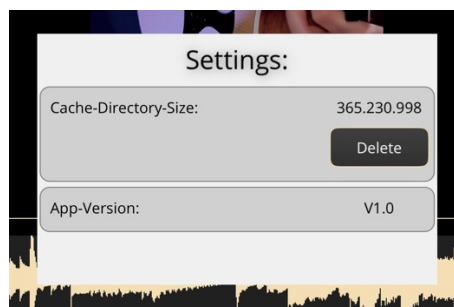
With that dialog, an existing video-file can be loaded from the video-library:



2.5. Settings- dialog

A technical restriction for apple-devices leads to the situation, that video-files from the video-library must be copied into an App-folder.

I call that "Cache-directory". If a video-file was already copied into that cache-area, the next access is using that "Cache-directory". With the settings-dialog, the size of this caching-area can be seen – and it can be deleted.




2.6. Help- dialog

The help-dialog shows this user-guide-document inside the App.

3.How to use MusicTrainerProf

3.1. Define a repeating-loop

To define and use a repeat-loop do the following steps:

- Load an audio- or video-file.
 - Let the player start or set a starting-position INSIDE the wave-view (Mouse or Touch)
 - Click on "Set Start"
 - Let the player furthermore playing or set an ending position INSIDE the wave-view.
 - Click on "Set Stop". The defined area is marked inside the wave-view.
-
- Enable the loop by clicking on this button: 
 - Also the tempo can now be slowed down with the tempo-slider.